



Procedure and Examination Chairs

ACCESSORY CATALOG



Model

| 6210 |

Sonesta manufactures and sells tables and chairs for urology, gynecology, urodynamic diagnostics and upper GI procedures.

Accessories: Sonesta 6210



Leg & foot rests

6210

Art. number

Leg rest holder (single)

This leg rest holder is standard on all models. By loosening one handle, you can adjust the leg rest to any height, width or angle. Can be rotated 360 degrees.



525-6338

Heavy duty rissler leg rests (pair)

This leg rest has a ball and socket construction allowing tilt of the leg cushion in any direction. In addition, it has infinite angling possibilities when mounted in our leg rest holder model 6338. Made of stainless steel.



525-6336

Fold up footrests (pair)

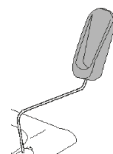
These footrests are adjustable in length from 30—42 cm/11,8"—16,5". They are also adjustable in width and slide outward 19 cm/7,5" each. The bottom is in the same upholstery as your chair. When folded they function as an extension cushion that transforms your chair into a table where the patient can lie down. The gas piston easily adjusts the angle. They are easily removed with a click-off system.



525-6331-10

Footplates (single)

Made of stainless steel with a plastic foot section, fits into our standard leg rest holder.



524-6337

Stirrups and clamps (pair)

Stirrups that provide safe and quick positioning which improves surgical site access. The stirrups comes with silicone straps for easier cleaning and attachment. Lithotomy range: +85° to +55°, abduction range: +25° to -9°, boot rotational angle: +/- 25°.



Stirrups & clamps 525-3100

Benefits & use:

- Multiple positioning options
- Functional design
- Enables optimal examination access
- Engineered ergonomics



Standard configuraton



Optional accessory

Accessories: Sonesta 6210



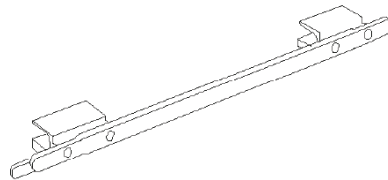
Arm rests

6210

Art. number

Detachable side rail

Fits on the table top's upper rail free part.
Used to attach accessories.



S

524-6329

Arm rest holder

This arm rest holder is used together with 524-6021-6 Arm Rest and 524-6329 detachable side rail. By loosening one handle, you can slide the holder up and down the length of the side rail..



S

524-6338-4

Arm rest

This arm rest is used together with the 524-6329 detachable side rail and 6338-4 arm rest holder. The arm rest is positioned on the left side of the table and the arm rest on the right side is detachable. The arm rest is covered with a soft foam material.



S

524-6021-6

Benefits & use:

- Easy access
- Practical use
- Patient comfort

S

Standard configuration

A

Optional accessory

Accessories: Sonesta 6210



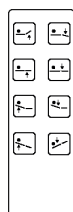
Other

6210

Art. number

Hand control

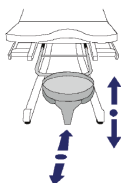
Waterproof hand control for 6210 table, with cable to transformer.



524-6356

Funnel kit

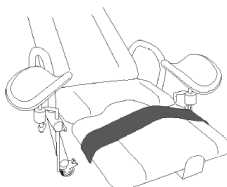
A removable plastic funnel (top diameter 236 mm/9") with drainage. It is mounted on a fixed height 'quick change' holder.



524-6325-9

Restraint strap

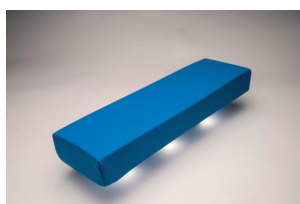
Velcro straps for patient fixation. Pair of 100 cm/39" long and 10 cm/3,9" wide straps.



524-P6415

Bolster cushion

Positioning cushion that is specifically designed to fill the gap of the 6210's mattresses in a laying position. It helps maintain a proper body alignment and increases the patient's comfort once the patient is positioned in a laying position.



529-710947



An ADDvise Group Company

SONESTA MEDICAL AB
INDUSTRIVÄGEN 7
171 48 SOLNA, SWEDEN
TEL: +46 8 502 572 80
INFO@SONESTAMEDICAL.SE
ORDER@SONESTAMEDICAL.SE
WWW.SONESTAMEDICAL.SE

SONESTA MEDICAL INC.
2 DEBUSH AVENUE UNIT C3
MIDDLETON, MA 01949, USA
TEL: +1 630-519-3450
INFOUS@SONESTAMEDICAL.SE
ORDERUS@SONESTAMEDICAL.SE
WWW.SONESTAMEDICAL.SE



Standard configuration



Optional accessory